



INFORMATION SHEET

2023 AUSTRALIAN LIVEABILITY CENSUS

ABOUT PLACE SCORE

Place Score is a groundbreaking engagement, performance, benchmarking, prioritisation and tracking company focused on understanding the lived experience of residents in their local places. Our purpose is to make places better for people by providing community insights that help us understand local values and current place experience in order to build a clear evidence base for planning and investment. Visit placescore.org

WHEN IS THE 2023 AUSTRALIAN LIVEABILITY CENSUS?

The Census will open on Australian Neighbour Day, Sunday 26th March, 2023 and close at midnight on June 30, 2023. Councils can share communications at any time during this period.

2021 Australian Liveability Census

In 2021 Place Score facilitated the first national Liveability Census, 44 local governments participated and over 32,000 records were collected directly from people across the country, in all regions and from all demographic groups. The results were added to our National Benchmark, the world's largest social research data set regarding liveability values and performance.

WHAT WILL THE LIVEABILITY CENSUS ASK YOUR COMMUNITY?

What is most important to you in your ideal neighbourhood?

Care Factor, a unique community values-capture tool allows you to understand what is important to your community. By quantifying the place attributes that are most valued by your community, you can plan improvement investments more effectively, and measure change over time. Each participant is asked to select three attributes that are most important to them out of 5 lists of 10 attributes.

How are each of 50 liveability attributes performing in your neighbourhood?

The PX (place experience) Assessment captures your community's assessment of their neighbourhood in terms of its positive/negative impact on them personally. Their combined inputs calculate a score of 1-100 that captures the quality of the place experience and identifies the place attributes are contributing positively or negatively. Conducting a PX Assessment before and after investment is a great way to obtain definitive data regarding the impact of improvements.

What would make your neighbourhood a better place for you to live?

The single open question, is linked to the incentive competition, where each participant has the chance to win one of 10 x \$100 vouchers.

HOW MUCH DOES IT COST TO PARTICIPATE?

As one of the 43 local governments within the Greater Cities Commission Six Cities region there is no cost to participate as a Distribution Council in 2023.

WHAT WILL COUNCILS BE REQUIRED TO DO?

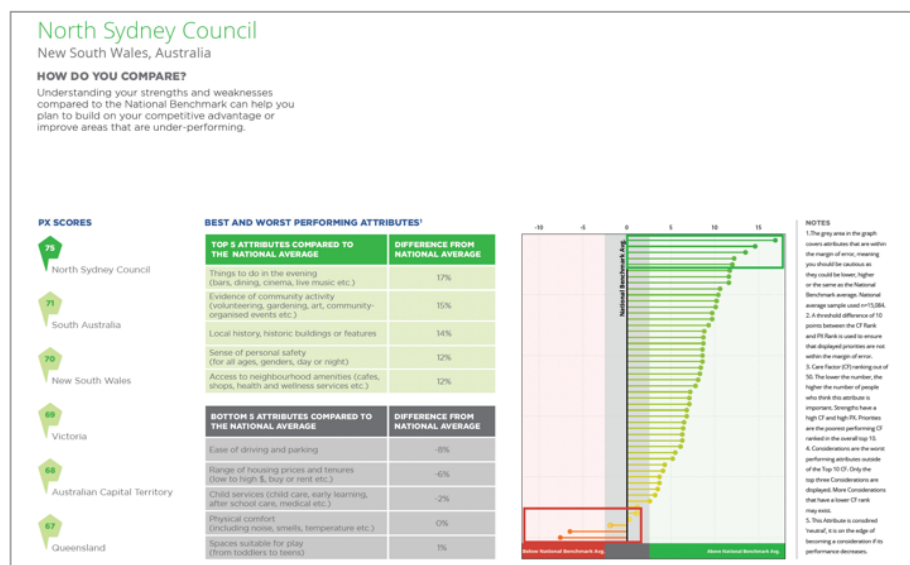
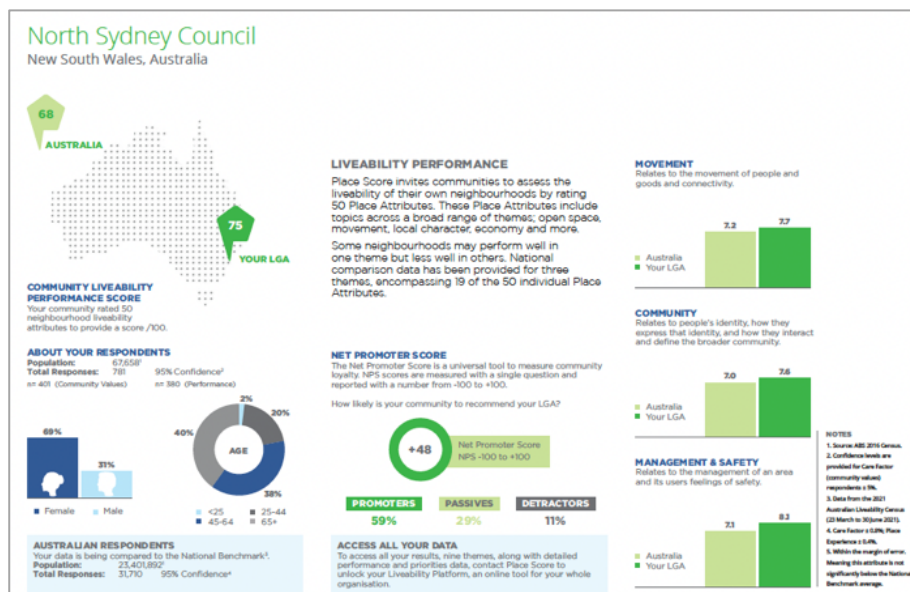
Place Score will provide a series of communication planning sessions which all Councils are invited to participate in to get the best results from your community. Distribution Councils will be asked to share Liveability Census communications and survey links via website, newsletters and social media. There is no limit to the number of responses you can collect – the more data the stronger your results.

WHAT RESULTS WILL WE RECEIVE?

The Place Score neighbourhood liveability methodology is designed to ensure results are actionable, providing a clear hierarchy of LGA strengths as well as priorities for improving liveability. Your Census Summary Report will include personalised results for your LGA:

- Respondent summary
- Net Promoter Score for your LGA
- Movement, Community, Management & Safety performance compared to Australian average
- Top Liveability Strengths
- Top Liveability Priorities
- Best and Worst Performing Liveability Attributes compared to Australian average
- Investment Priorities for improving liveability in your LGA

Distribution Council - Executive Summary Report



LC23 Executive Summary Report - Example pages (5 page report)