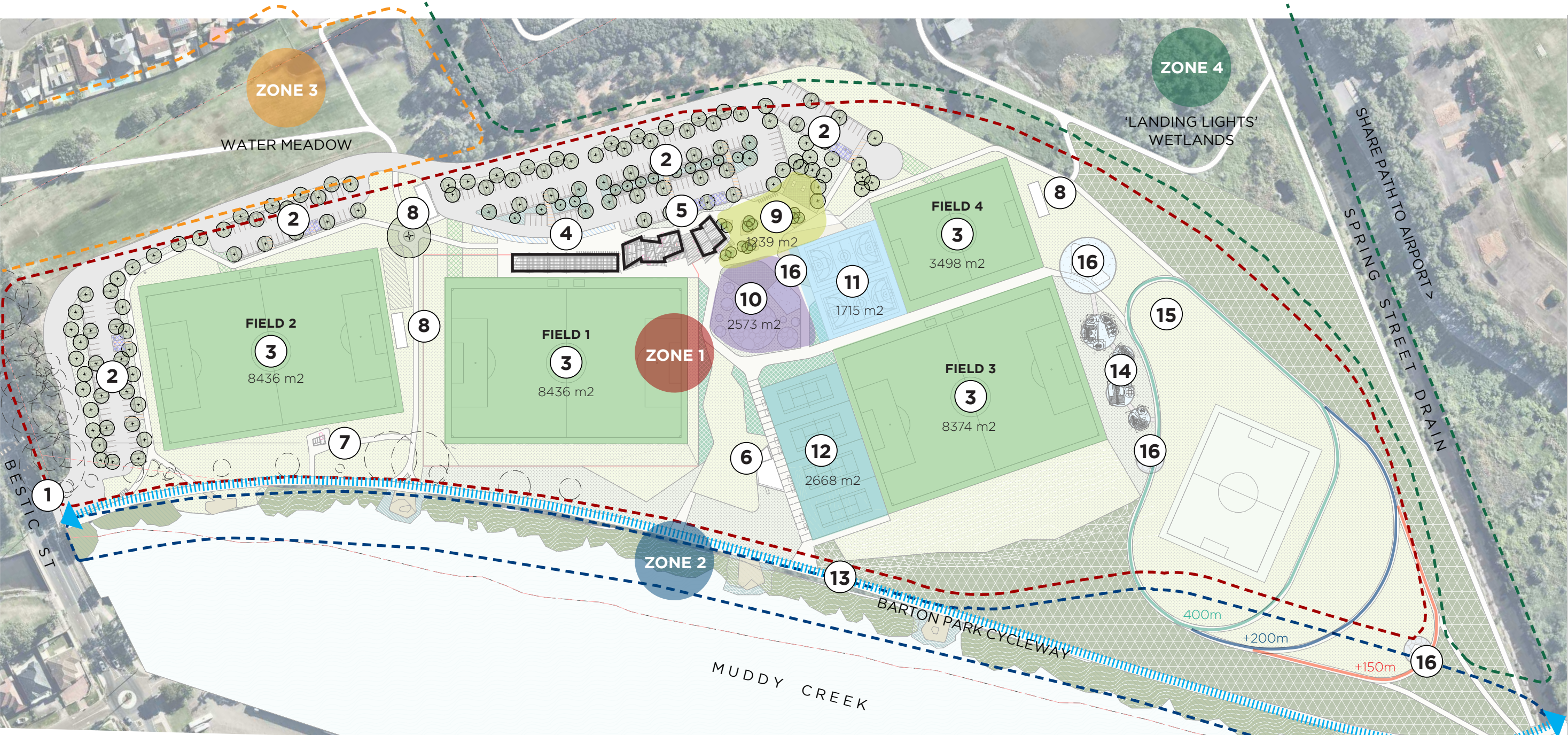


Site Layout - Developed Design



LEGEND

- 1 Bestic Street Entry**
Identity of entry improved through wayfinding signage and generous native planting

2 Access road & carparking
Internal roads and carparking designed to minimise headlight glare into adjacent residential properties

3 FIELD 1: New football field (paid access)
FIELD 2: New football field
FIELD 3: Ex. football field upgraded
FIELD 4: New training field (ex. stadium & mounds to be removed)
- 4 Proposed Grandstand**

5 Proposed Clubhouse

6 Tennis clubhouse

7 Upgraded toilet block

8 Storage

9 Arrival Grove
Treed seating area creates a pleasant meeting place.
- 10 Adventure playspace**
Nature play, slides, climbing, planted mounds and passive seating/surveillance for parents.

11 Multi-purpose courts
2 x multi-purpose courts, including basketball and futsal, surrounded by seating and garden

12 Tennis courts
4 x tennis courts with adjacent seating under vegetated arbour
- 13 Barton Park sharepath**
Connects to regional sharepath and cycle route, including passive lookout platforms along its length.

14 Fitness zone
Variety of fitness equipment provides a range of active recreation options.

15 Running loops
Series of interwoven walking/running tracks with distance markers

16 Shade structures